



Registered office
Via Giovanni Porzio, 4
isola G/1 - Torre prof - studi
80143, Centro Direzionale
Napoli, Italy
Vat number : 07920480634

Offices and plant
ASI Marcianise Nord
Via Trivio Quaranta, 27
81025 Marcianise (CE)
Tel: +39.081.7879033
Fax: +39.081.19285790

International contacts
Mr. Jean D'Hainaut
Phone: +39.348.4994405



- ▶ Painting of tunnel sides and ceilings;
- ▶ Mechanical painting with several kind of paints: tempera, washable, acrylic, epoxy – acrylic, epoxy, photocatalytic and epoxy-ceramic;
- ▶ Perfect cleaning of the road, sign panels, markings and lightings.

Painting

For a bright and safe tunnel



TEMPERA CYCLE

Tempera cycle on already painted tunnel surfaces:

- ▶ Simple washing to remove dust and smog;
- ▶ Two or three coats until complete covering;

Tempera cycle on new and never painted tunnel surfaces:

Before the above mentioned cycle it is necessary to apply two coats of vinilic resin having the molecules five times smaller than tempera's resin.

Very cheap cycle suitable for almost Italian tunnels having rough, moisted and water infiltration surfaces.

Compact appearance, pure white colour.

ACRYLIC CYCLE

For already painted tunnel surfaces:

- Simple washing to remove dust and smog ◀
- Two or three coats until complete covering ◀

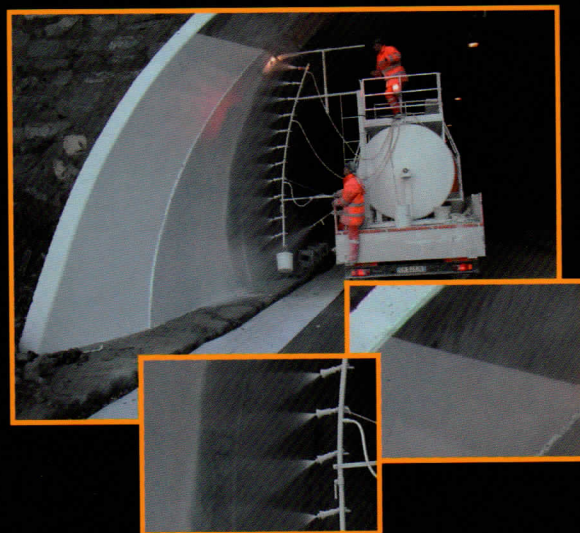
New tunnel surfaces:

Before the above mentioned cycle it is necessary to apply two coats of vinilic resin having the molecules five times smaller than acrylic's resin.

Middle expensive cycle suitable for new or already painted surfaces. Suitable for tunnels having a good finishing level without moist or water infiltration.

Resistant to several rotolavaggi. Tough appearance highlighting surface's irregularities.

Available colours: RAL 9010 – RAL 2002.



RED STRIPES ON TEMPERA CYCLE

It's impossible to produce tempera painting in RAL 2002 (orange colour). It's instead possible to produce it with acrylic resins.

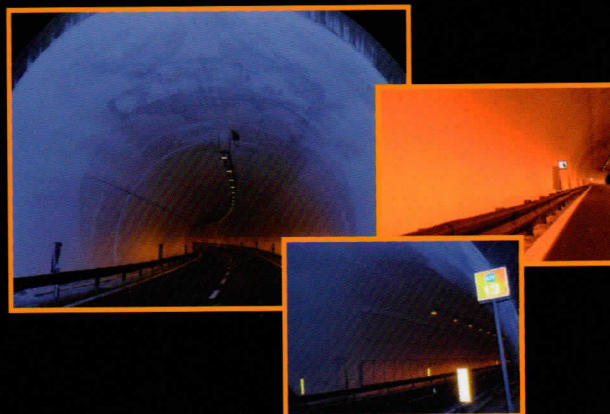
If the previously applied tempera painting is of excellent quality it's possible to overcoat it with an acrylic paint RAL 2002 (orange colour). It's useful a combined tempera/acrylic cycle if the rotolavaggio cannot be used?

PAINTING OF TUNNEL CEILINGS

For new or already painted surfaces:

- Thorough washing to remove dust and smog ◀
- Two or three coats of tempera paint until complete covering ◀

Great professionalism and a good organization is necessary to apply a thin layer of paint to leave the road, signs and guard-rails perfectly clean. Compact appearance, pure white colour. It's not possible to use other kinds of paint without a thorough and very difficult plastering.



EPOXYACRYLIC CYCLE

For new or already painted surfaces:

Rotolavaggio with rotative brushes and detergent in order
to remove dust and smog

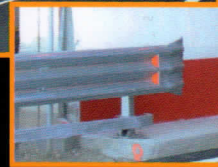
Two or three coats of epoxy-acrylic paint until complete covering

Very good but expensive cycle.

Suitable for tunnels having a very good finishing (like house walls),
without moist or water infiltration.

Tough appearance highlighting surface's irregularities.

Available colours: RAL 9010 – RAL 2002.



EPOXY-CERAMIC CYCLE

For new surfaces:

▶ Rotolavaggio with rotative brushes and detergent in order to remove
dust and smog;

▶ Two or three coats of epoxyacrylic paint until complete covering.

Very good cycle. Suitable for tunnels having a perfect finishing (better
than house walls) without moist or water infiltration.

Resistant to a countless number of rotolavaggi. Very tough appearance
highlighting surface's irregularities.

Available colours: RAL 9010- RAL 2002

Epoxy paint with the addition of ceramic microelements. Pure white
colour RAL 9010.

PHOTOCATALYTIC CYCLE

For new and already painted surfaces:

Simple washing to remove dust and smog

One coat with siloxane resin primer

Two or three coats of photocatalytic paint until complete covering

Average expensive cycle suitable for good finishing surfaces without
moist or water infiltration.

The action of ultraviolet rays (additional electric plant to be installed)
starts the photocatalytic reaction by transforming smog into CO₂.



DRAIN GUTTERS CLEANING

▶ Cleaning of gutters and bumps using a roadsweeping /vacuum cleaner
machine (power of 18.000 lt/min).

▶ Cleaning of the sidewalks by the use of the third extra brush.

OUR MOST IMPORTANT CUSTOMERS

- ▶ Autostrade per l'Italia SpA:
Tronco di Genova, Udine, Pescara, Cassino, Milano, Roma;
- ▶ Tangenziale di Napoli SpA;
- ▶ Tangenziale di Milano SpA;
- ▶ Autostrada del Brennero SpA;
- ▶ RAV Aosta - Quincinetto;
- ▶ Traforo del Monte Bianco;
- ▶ Traforo del Frejus;
- ▶ Autostrada dei Fiori;
- ▶ SALT Livorno - Sestri Levante;
- ▶ Strada dei Parchi SpA;
- ▶ Autostrada della CISA;
- ▶ Autostrada Napoli - Salerno;
- ▶ Autostada Salerno - Reggio Calabria;
- ▶ Autostrada Palermo - Catania;
- ▶ Autostrada Torino - Savona;
- ▶ Autostrada Milano - Mare;
- ▶ SAT Tirrenica;
- ▶ Autostrada BS-VR-VI-PD;
- ▶ Autostrade Centropadane SpA;
- ▶ Anas:
Napoli, Bari, Campobasso, Milano, Roma, Potenza, Torino, Perugia, Ancona, Trieste, Aosta, L'Aquila;
- ▶ Public administrations managing highways:
Bolzano, Trento, L'Aquila, Pordenone, Torino, Genova, Aosta, Alessandria;



EQUIPMENT FOR THE SAFETY OF WORKING PEOPLE



- ▶ All teams at work protected with brightly panels;
- ▶ Every mobile site is supplied with crash absorber (TMA) in order to improve workers and drivers safety.

STAFF AND TECHNICAL EQUIPMENT

- ▶ 35 persons among whom executives, technicians, project managers and skilled workers
- ▶ 6 teams, each consisting of five persons, perfectly equipped
- ▶ 7 double drive tanks (10.000 litres) for paintings
- ▶ 5 tank trucks (12.000 litres) for wash and rotolavaggio
- ▶ 4 tank trucks with laser equipment for washing acoustic-panels
- ▶ 5 trucks for the implementation of the road lighted signs
- ▶ 8 cars for worker's transport
- ▶ 5 airless high pressured painting equipments
- ▶ 1 very high pressured mobile unit (600bar)
- ▶ 1 roadsweeping /vacuum cleaner machine (power of 18.000 lt/min)



DAILY PRODUCTIVITY

- ▶ 200.000 sq.mt painting with one-component product
- ▶ 60.000 sq.mt painting with two-component product
- ▶ 60.000 sq.mt of pressured water rotolavaggio
- ▶ 60.000 mt. stud rotolavaggio
- ▶ 20.000 sq.mt rotolavaggio of any kind of acoustic panels

PERFORMED WORKS IN 40 YEARS

- ▶ More than 100 milion sq.mt tunnel painting
- ▶ More than 20 milion sq.mt tunnel rotolavaggio and simple washing
- ▶ More than 200.000 sq.mt. acoustic panels rotolavaggio
- ▶ More than 3.000 km. stud rotolavaggio
- ▶ More than 600 milion sq.mt industrial painting and road marking
- ▶ More than 20 milion sq.mt surface sandblasting

All equipments are certificated and complying with
2006/42 and 98/37 ECC Machine Directives

